



MRP-L18 Polyclonal Antibody

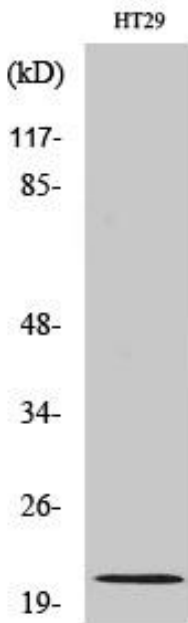
| | |
|----------------------------------|--|
| Catalog No | YP-Ab-03981 |
| Isotype | IgG |
| Reactivity | Human;Rat;Mouse; |
| Applications | WB;IHC;IF;ELISA |
| Gene Name | MRPL18 |
| Protein Name | 39S ribosomal protein L18 mitochondrial |
| Immunogen | The antiserum was produced against synthesized peptide derived from human MRPL18. AA range:1-50 |
| Specificity | MRP-L18 Polyclonal Antibody detects endogenous levels of MRP-L18 protein. |
| Formulation | Liquid in PBS containing 50% glycerol, 0.5% BSA and 0.02% sodium azide. |
| Source | Polyclonal, Rabbit,IgG |
| Purification | The antibody was affinity-purified from rabbit antiserum by affinity-chromatography using epitope-specific immunogen. |
| Dilution | WB: 1/500 - 1/2000. IHC: 1/100 - 1/300. ELISA: 1/20000.. IF 1:50-200 |
| Concentration | 1 mg/ml |
| Purity | ≥90% |
| Storage Stability | -20°C/1 year |
| Synonyms | MRPL18; HSPC071; 39S ribosomal protein L18; mitochondrial; L18mt; MRP-L18 |
| Observed Band | 21kD |
| Cell Pathway | Mitochondrion . |
| Tissue Specificity | Brain,Eye,Umbilical cord blood, |
| Function | similarity:Belongs to the ribosomal protein L18P family., |
| Background | This nuclear gene encodes a protein component of the larger 39S subunit of mitochondrial ribosome. This protein may also aid in the import of nuclear-encoded 5S rRNA into mitochondria. Alternative splicing results in multiple transcript variants, most of which are not predicted to encode a protein. A pseudogene of this gene is found on chromosome 16. [provided by RefSeq, Jan 2016], |
| matters needing attention | Avoid repeated freezing and thawing! |



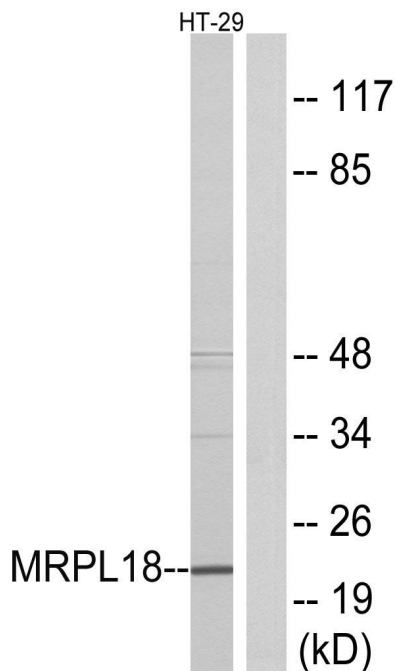
Usage suggestions

This product can be used in immunological reaction related experiments. For more information, please consult technical personnel.

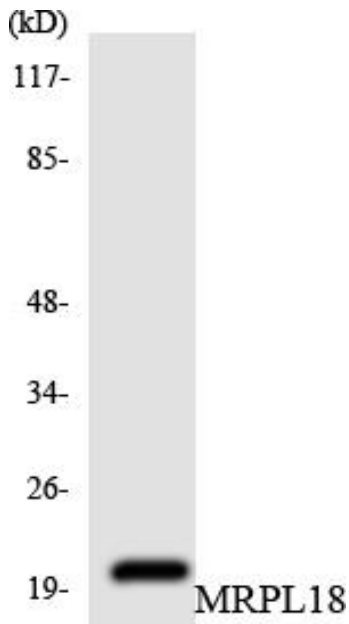
Products Images



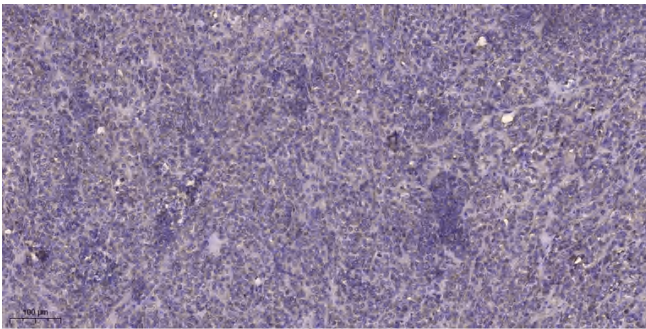
Western Blot analysis of various cells using MRP-L18 Polyclonal Antibody diluted at 1:1000



Western blot analysis of lysates from HT-29 cells, using MRPL18 Antibody. The lane on the right is blocked with the synthesized peptide.



Western blot analysis of the lysates from HUVECcells using MRPL18 antibody.



Immunohistochemical analysis of paraffin-embedded human Colon cancer. 1, Antibody was diluted at 1:200(4° overnight). 2, Tris-EDTA,pH9.0 was used for antigen retrieval. 3,Secondary antibody was diluted at 1:200(room temperature, 45min).